



WOLTMAN 45 DR

WOLTMAN PILING & DRILLING RIGS

High capacity **Designed**
for multiple jobs per day
Low weight, wide tracks

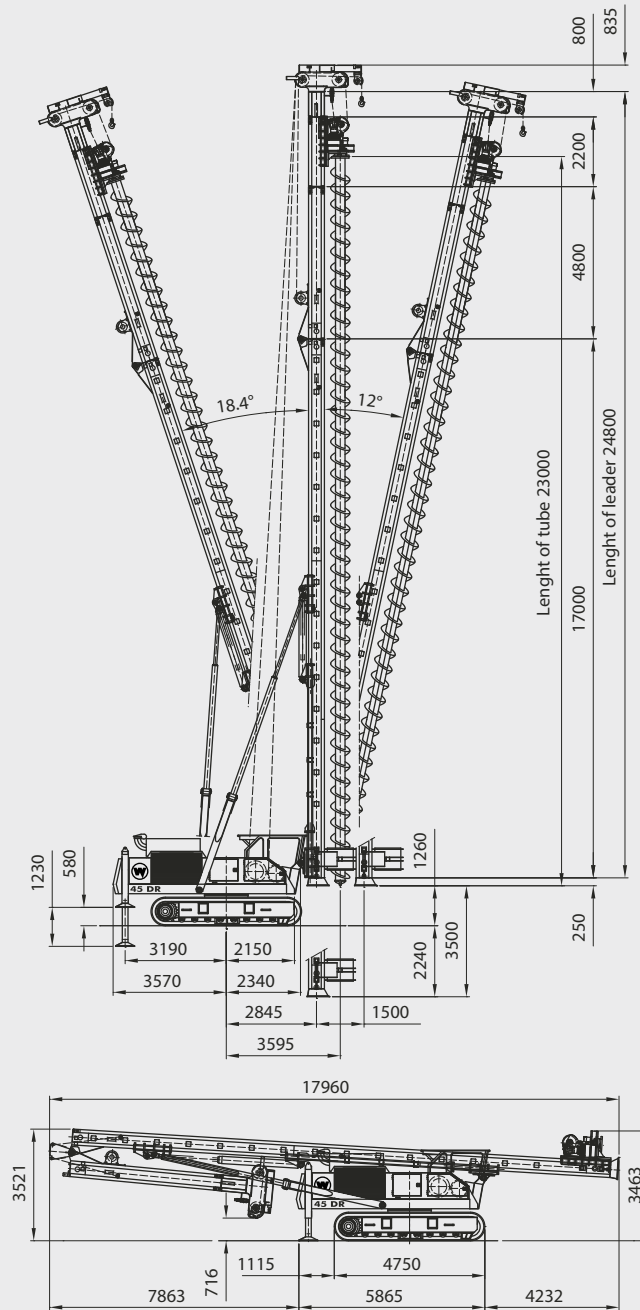
DIESEKO GROUP

 **WOLTMAN**
PILING & DRILLING RIGS

WOLTMAN 45 DR

Woltman is continuously improving their range of equipment. Developments in relation to emission standards and fuel efficiency might result in different specifications. No rights can be attached to the dimensions and specifications mentioned on this leaflet because they might have changed without further notification. All data is subject printing and conversion errors.

TECHNICAL SPECIFICATIONS



All dimensions are in millimeters

Operational specifications

Recommended Rotary head	PVE	RH-15/RH-20		
Max. torque on leader	kNm	150	ton/m	16.9
Leader length std. (max.)	mtr	21,8 (24,8)	ft	71.5 (81.4)
Max. drill depth	mtr	19 (22)	ft	62.3 (72.2)
Max. diameter	mm	900	inch	35
Pull up force	ton	40	lbs	88,185
Pull down force	ton	10	lbs	22,046
Operational weight RH-15	ton	53	lbs	116.845
Max. oil flow	ltr/min	520	g/min	137
Max. pressure	bar	320	psi	4,641

Weights

Transport weight	ton	49	lbs	108,026
Transport weight w/o counterweight	ton	43	lbs	94,799
Transport weight incl. RH-15	ton	54	lbs	119,049
Total counterweight	ton	5,4	lbs	11,905

Rig specifications

Engine	Caterpillar C-9.3
Engine output	kW 294 HP 400
Hydraulics	Bosch Rexroth
Hydraulic system	Openloop

* subject to capacity charts

Woltman Piling and Drilling Rigs B.V. Everdenberg 17 4902 TT Oosterhout The Netherlands
T +31 (0)184 - 425 949 F +31 (0)184 - 424 820 I www.woltmanrigs.com E info@woltmanrigs.com

Member of

DIESEKO GROUP