

**WOLTMAN 90 DR**



**WOLTMAN PILING & DRILLING RIGS**

**CAT engine (>750HP), Multi-purpose**  
**Soil displacement drilling**  
**Extremely high torque (50 t/m)**

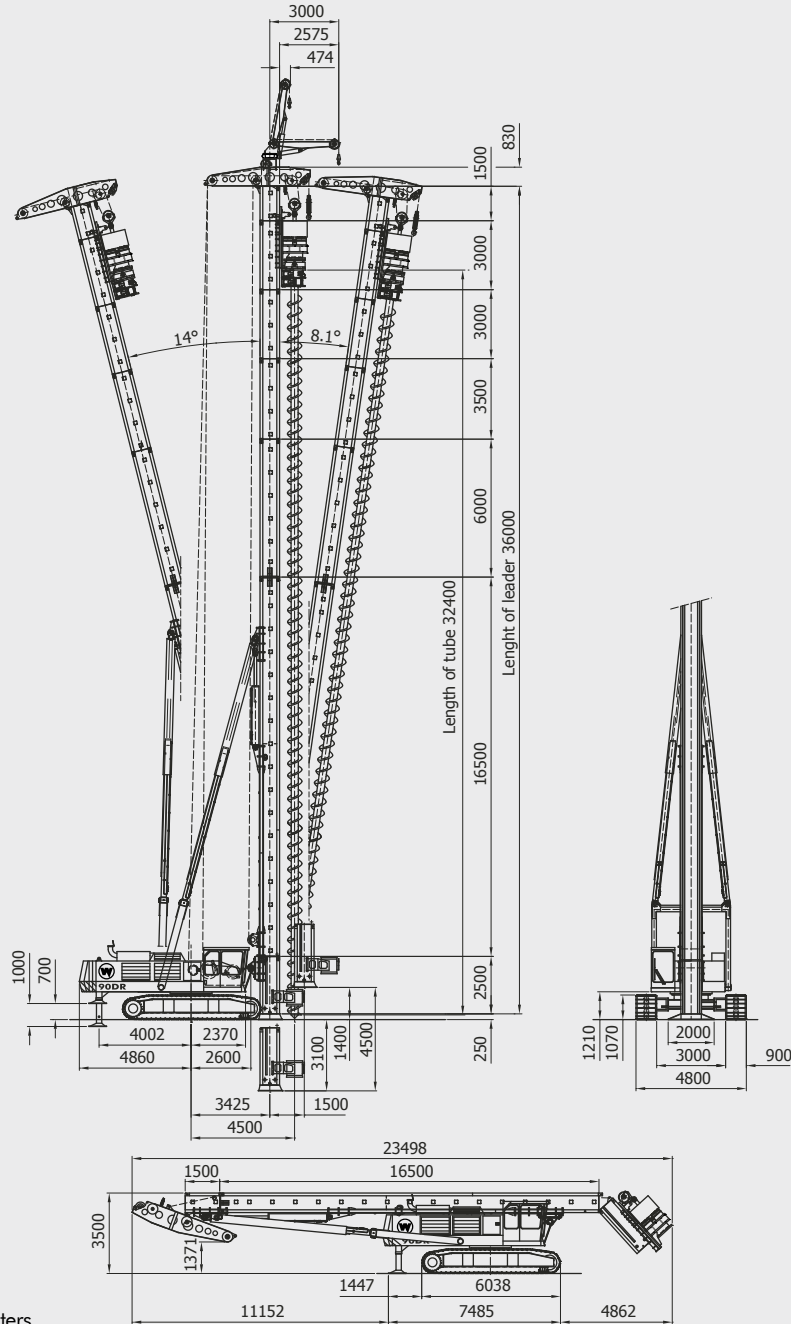
**DIESEKO GROUP**

 **WOLTMAN**  
PILING & DRILLING RIGS

# WOLTMAN 90 DR

Woltman is continuously improving their range of equipment. Developments in relation to emission standards and fuel efficiency might result in different specifications. No rights can be attached to the dimensions and specifications mentioned on this leaflet because they might have changed without further notification. All data is subject printing and conversion errors.

## TECHNICAL SPECIFICATIONS



All dimensions are in millimeters

### Operational specifications

Recommended Rotary head	PVE	RH-40/RH-45/RH-50		
Max. torque on leader	kNm	500	ton/m	56.2
Leader length std (max.)	mtr	30/33/36	ft	98.4/108.3/118.1
Max. drill depth	mtr	26/29/32	ft	85.3/95.1/105.0
Max. diameter	mm	1.500	inch	59
Pull up force	ton	100 (12.5x8)	lbs	220,462
Pull down force	ton	30 (15x2)	lbs	66,139
Operational weight RH-45	ton	102	lbs	224,871
Max. oil flow	ltr/min	800	g/min	211
Max. pressure	bar	320	psi	4,641

### Weights

Transport weight excl. rotary	ton	90	lbs	198,416
Transport weight w/o counterweight	ton	75	lbs	165,347
Tr. weight w/o tracks & counterweight	ton	57	lbs	125,663
Weight per track drive	ton	9	lbs	19,842
Total counterweight	ton	15	lbs	33,069

### Rig specifications

Engine	Caterpillar C18
Engine output	kW 563 HP 760
Hydraulics	Bosch Rexroth
Hydraulic system	Openloop

\* subject to capacity charts